

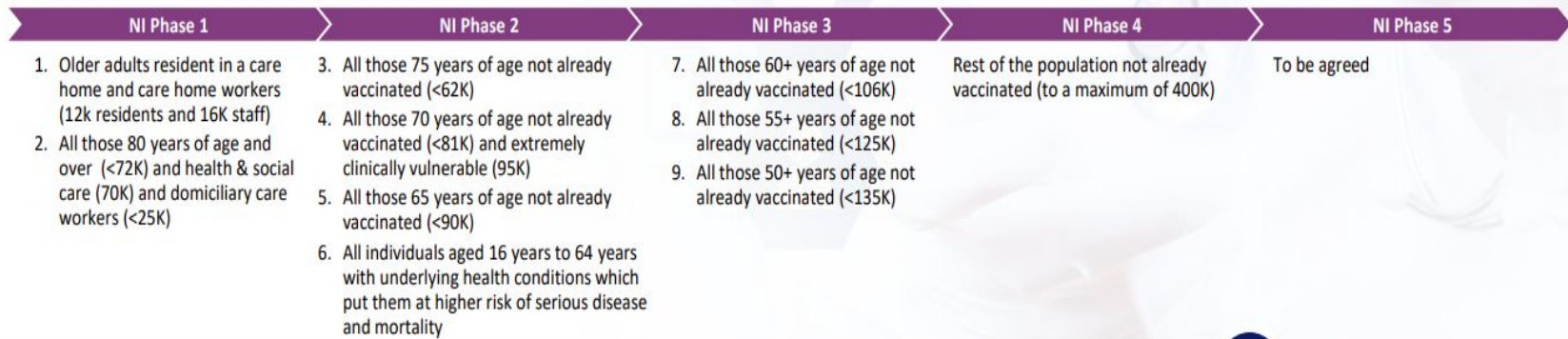
COVID-19 VACCINATION PROGRAMME PHASED PLAN

Overall planning assumptions:

- Planning on a 4 Nation basis – with common principles/protocols and advice as directed/advised by the Joint Committee on Vaccination and Immunisation (JCVI)
- NI modeling is undertaken for the phasing and organisation of services dependent on availability of vaccine, vaccine characteristics and the priority groups identified



Programme





Vaccination Programme Phasing

Indicative timing of Phases

DEC 2020

Phase 1

- **Priority Group 1:** Care Homes residents (12K) and staff (20K)
- **Priority Group 2:** Health and social care staff (70K+) and over 80 year olds (72K)

FEB 2021

Phase 2

- **Priority Groups 3 to 6:** In 5 years tranches from 75 years+ to 65 years+ (233K). Clinically vulnerable under 65 years. Extremely vulnerable (95K) / moderate (130K)

SPRING 2021

Phase 3

- **Priority Groups 7 to 9:** In 5 year tranches from 60-50 year olds not already vaccinated. 60 year+ (106K) / 55 year + (125K) / 50 year + (135K)

SUMMER 2021

Phase 4

- **Mass vaccination Programme**
General population not already vaccinated 18 years+

2022 ONWARDS

Phase 5

- **Routine vaccination Programme**
Target population and vaccine to be advised

Volume for Target Populations

>175K

<458K

<366K

<400K

TBA



Mobile teams



HSC Centres



GP Centres



Roving teams



Delivery Models

Vaccination Sites

Provided 7 days week by teams 8am-8pm

Trust Mobile teams – using Pfizer vaccine

Target population: Phase 1 - Priority 1 cases

- Residents of care homes
- Care home staff

HSC Trust Phase 1 - Priority 2 cases - using Pfizer vaccine

- 8am-8pm 7 days a week
- Target population - HSC Trust employees and other health and social care workers by agreement

GP Practices - working in HUBS – AstraZeneca Vaccine

Phase 1 Priority 2 over 80 year olds (circa 72kk)
Phase 2 Priority 3-6 groups 75 years+ / 70 years+ / 65 years + (233k age related)
Clinically vulnerable population under 65 years (225K – of which 95k extremely vulnerable)

Roving – AstraZeneca Vaccine

Target - Housebound individuals in priority groups and new care home residents, referred by GP

Other

- Community Pharmacy (AZ only)
- HSC and Care home staff in phase 2 as a clear up
- Phase 4 mass vaccination
- Other to be agreed



Vaccines

Pfizer/ BioNTech

- -75°C +/-15°C storage for up to 6 months
- 5 day shelf life once defrosted
- Large pack size 975 doses
- 2 doses, interval of 12 weeks
- 15 minute observation period after vaccination

Oxford/ AstraZeneca

- Drug product targeted at 2-8°C
- ,8 dose vial and 10 dose vial (IDT), 80-100 doses per pack
- The platform shelf life is ≥ 6 months at 2-8°C
- 2 doses, interval of 12 weeks
- No observation period